

FUSTEQ SERIES

**DIESEL GENERATOR
GROUPE ELECTROGENE DIESEL
GRUPO ELECTROGENO DIESEL
GRUPPO ELETTOGENO DIESEL**

MODEL
MODELE
MODELO
MODELLO

PK90FQ



ULTRA SILENT VERSION



GENERATING SET PERFORMANCE PERFORMANCES DU GROUPE PRESTACIONES DEL GRUPO PRESTAZIONI DEL GRUPPO		50 Hz	60 Hz
Voltage Voltage Voltaje Tensione	V	400 / 230	V 220 / 127
Continuous Power Puissance service continue Potencia servicio continuo Potenza servizio continuo	PRP	kVA 80	kVA 88
Stand-by Power Puissance service secours Potencia servicio emergencia Potenza servizio in emergenza	LTP	kVA 88	kVA 97
Continuous Power Puissance service continue Potencia servicio continuo Potenza servizio continuo	PRP	kWe 64	kWe 70
Stand-by Power Puissance service secours Potencia servicio emergencia Potenza servizio in emergenza	LTP	kWe 70	kWe 78
Power factor Facteur de puissance Factor de potencia Fattore di potenza	cos φ	0,8	0,8
Fuel consumption Consommation combustible Consumo de combustible Consumo combustibile	70 %	l/h 12,3	l/h 13,8
Noise level Niveau de bruit Nivel de ruido Livello rumorosità	dB(A)@7m	54dB(A) without load	
Limit ambient temperature Limite de la température ambiante Limite de la temperatura ambiente Limite di temperatura ambientale		55°C minimum	

ENGINE MOTEUR MOTOR MOTORE	PERKINS		1104A-44TG2	
PERFORMANCE PERFORMANCES PRESTACIONES PRESTAZIONI	1500 rpm		1800 rpm	
Continuous Power Puissance service continue Potencia servicio continuo Potenza servizio continuo	PRP	kWm	72,6	kWm 83,7
Stand-by Power Puissance service secours Potencia servicio emergencia Potenza servizio in emergenza	LTP	kWm	79,8	kWm 91,9
Specific fuel consumption Consumption spécifique combustible Consumo específico de combustible Consumo specifico combustibile		g/kWh	50 % 220 75 % 212 100 % 212 110 % 212	50 % 235 75 % 222 100 % 220 110 % 219
Diesel 4 Stroke – Injection type Diesel 4 temps – Type injection Diesel 4 tiempos – Tipo de inyeccion Diesel a 4 tempi – Tipo di iniezione				direct directe directa diretta
Aspiration type Type d'aspiration Tipo de aspiracion Tipo d'aspirazione				Turbocharged Suraalimentée sobrealimentato sovralimentata
Cooling system Refroidissement Sistema de refrigeracion Raffreddamento				Water Eau Agua Acqua
Speed governor Régulateur de tours Regulador Regolatore di giri				Mechanical Mécanique Mecanico Meccanico
Cylinders, numbers and arrangement Nombre et disposition des cylindres Cilindros, numero y disposicion Numero e disposizione dei cilindri				4 L
Total displacement Cylindrée totale Cilindrata total Cilindrata totale				cm ³ 4.400
Bore x stroke Alésage x course Diámetro x carrera Alesaggio x corsa				mm 105.0 x 127.0
Compression ratio Rapport de compression Relación de compresión Rapporto di compressione				17.25 :1
Engine electric system voltage Voltage système électrique moteur Voltaje sistema eléctrico motor Voltaggio sistema elettrico motore				12 V
Derating for temperature Déclassement pour temperature Declasamiento para temperatura Declassamento per temperatura				0 ÷ 25°C 0 > 25 °C 2 % / 10°C
Derating for altitude Déclassement pour altitude Declasamiento para altitud Declassamento per altitudine				0 ÷ 1000 m 0 > 1000m 1,5 % / 500 m

ALTERNATOR ALTERNATEUR ALTERNADOR ALTERNATORE		MECCALTE	
PERFORMANCE PERFORMANCES PRESTACIONES PRESTAZIONI		1500 rpm	1800 rpm
Model Modèle Modelo Modello		ECP32-4L/4	ECP32-4L/4
Continuous Power Puissance service continue Potencia servicio continuo Potenza servizio continuo	40 °C	kVA 80,0 kWe 64,0	kVA 92 kWe 73,6
Stand-by Power Puissance service secours Potencia servicio emergencia Potenza servizio in emergenza	40 °C	kVA 82 kWe 65,6	kVA 98 kWe 78,4
Stand-by Power Puissance service secours Potencia servicio emergencia Potenza servizio in emergenza	27 °C	kVA 87 kWe 69,6	kVA 104 kWe 83,2
Efficiency Rendement Eficiencia Efficienza		2/4 89,6 % 3/4 90,9 % 4/4 90,5 %	2/4 91,0 % 3/4 93,2 % 4/4 93,0 %
Standard winding connections Liaison des bobinages Tipo de conexión Collegamento avvolgimenti		Y	YY
Exciter Excitatrice Excitador Excitatrice	brushless rotating exciter design with solid state pivotante sans brosses avec pont de diodes pivotants puente de diodos sin escobillas rotantes rotante senza spazzole con ponte di diodi rotanti		
Poles Poles Polos Poli			4
Phases Phases Fases Fasi			3 + N
Wires Fils Hilos Morsetti			12
Voltage accuracy Regulation Voltage Regulación voltaje Regolazione tensione			± 1 %
Insulation class Classe d' isolation Classe de aislamiento Classe di isolamento			H
Enclosure Degré de protection mécanique Grado de protección mecánica Grado di protezione meccanica			IP 23
Air volume Volume d'air Volumen de aire Volume d'aria		50 Hz 60 Hz	11,8 m ³ /min 14,5 m ³ /min
Standard AVR model Modèle AVR standard Modelo AVR standard Modello AVR standard			DSR
Derating for temperature Déclassement pour temperature Declasamiento para temperatura Declassamento per temperatura		0 ÷ 40°C > 40 °C	0 3 % / 5°C
Derating for altitude Déclassement pour altitude Declasamiento para altitud Declassamento per altitudine		0 ÷ 1500 m 1500 ÷ 2500 m 2500 ÷ 3000 m	0 3% / 500 m 4% / 500 m

LOGISTIC INFORMATION
INFORMATIONS LOGISTIQUES
INFORMATION LOGISTICA
INFORMAZIONI LOGISTICHE

	Integrated fuel tank capacity Capacité réservoir intégré Capacidad Tanque integrado Capacità Serbatoio integrato		Weight Poids Peso Peso	Dimensions Cotes d'encombrement Medidas externas Dimensioni d'ingombro		
	(L.)			(cm)		
	STD	EXTRA1		(kg)	L	W
SOUND PROOF VERSION VERSION INSONORISEE VERSION INSONORISADA VERSIONE INSONORIZZATA	300	ON REQUEST	1960	265	113	180

GENSET STANDARD EQUIPMENT
EQUIPEMENT STANDARD GROUPE ELECTROGENE
EQUIPAMIENTO STANDARD GRUPO ELECTROGENO
EQUIPAGGIAMENTO STANDARD GRUPPO ELETTOGENO

GB	F	E	I
<ul style="list-style-type: none"> ✓ Lifting eye ✓ Fully banded fuel tank ✓ Integrated fuel tank ✓ Vibration dampers ✓ One or more electric fans controlled by Inverter VSi ✓ Manual autostart control panel ACP7310AUS with circuit breaker ✓ Battery ✓ Ultra silent canopy ✓ Residential silencer ✓ Fork lift guides 	<ul style="list-style-type: none"> ✓ Crochet de levage ✓ Bac de rétention ✓ Réservoir intégré ✓ Amortisseurs de vibration ✓ Un ou plusieurs ventilateurs électriques commandés par Inverter VSi ✓ Démarrage manuel autostart ACP7310AUS avec disjoncteur de protection ✓ Batterie ✓ Capotage ultra-silencieux ✓ Silencieux résidentielle ✓ Supports pour fourches 	<ul style="list-style-type: none"> ✓ Gancho central ✓ Tanque del combustible con sistema de recolección de líquidos ✓ Tanque de combustible integrado ✓ Sistema de amortiguación anti-vibrante ✓ Uno o más ventiladores eléctricos controlados para Inverter Vsi ✓ Cuadro manual autostart ACP7310AUS con interruptor magnetotérmico ✓ Batería ✓ Cabina ultra-silenciosa ✓ Silenciador residencial ✓ Supportes para carretilla 	<ul style="list-style-type: none"> ✓ Gancio di sollevamento centrale ✓ Serbatoio con vasca di raccolta liquidi ✓ Serbatoio integrato ✓ Anti vibranti ✓ Una o più ventole elettriche controllate da tecnologia Inverter VSi ✓ Quadro di comando manuale autostart ACP7310AUS con interruttore magnetotermico ✓ Batteria ✓ Cabina ultra silenziosa ✓ Marmitta residenziale ✓ Porta forche

MANUAL CONTROL PANEL
COFFRET ELECTRIQUE MANUEL
CUADRO ELECTRICO MANUAL
QUADRO ELETTRICO MANUALE

ACP 7310 AUS

125A (400 V - 3 ph - 50Hz - 1500 rpm)
 250A (220 V - 3 ph - 60Hz - 1800 rpm)

STANDARD EQUIPMENT: 4 poles circuit breaker Electronic control board DSE 7310 Control panel box key Emergency Stop button	EQUIPEMENT STANDARD: Disjoncteur de protection 4 pôles Fiche électronique DSE 7310 Clé pour serrure du coffret Interrupteur d'arrêt d'urgence	EQUIPAMIENTO STANDARD: Interruptor magnetotermico 4 polos Carta electronica DSE 7310 Llave cuadro Botón de parada de emergencia	EQUIPAGGIAMENTO STANDARD: Interruttore magnetotermico 4 poli Scheda elettronica DSE 7310 Chiave quadro Pulsante di arresto di emergenza
---	---	---	---




**DSE
7310**

CONTROL BOARD
CARTE ELECTRONIQUE DE CONTROL
CARTA ELECTRONICA DE CONTROL
SCHEDA ELETTRONICA DI CONTROLLO

PROTECTIONS	PROTECTIONS	PROTECCIONES	PROTEZIONI
Low oil pressure High engine temperature Low fuel level Fail to start Fail to stop Emergency stop Over/under generator frequency Over/under generator voltage Over/under speed Fuel level Belt breakage Over current Over/under battery voltage	Basse pression huile moteur Haute température moteur Basse niveau combustible Non démarrage Non arrêt Arrêt d'urgence Sur/sous générateur fréquence Sur/sous générateur voltage Sur/sourvitesse Niveau de combustible Rupture courroie Surcourant Sur/sus la tension de batterie	Baja presión aceite Elevada temperatura motor Baja nivel carburante Falta de arranque Falta de parada Parada de emergencia Sobre/bajo generatore frecuencia Sobre/bajo generatore voltaje Sobre/bajo velocidad nivel de combustible Ruptura correa Corriente maxima Sobre/bajo voltaje de la batería	Bassa pressione olio Alta temperatura motore Basso livello di carburante Mancato avviamento Mancato arresto Stop d'emergenza Sovra/sotto frequenza generatore Sovra/sotto voltaggio generatore Sovra/sotto velocità Livello del carburante Rottura cinghia Sovraccorrente Sovra/sotto tensione della batteria
DIGITAL METERS	VOYANT NUMERIQUE POUR	VISOR DIGITAL PARA	MISURATORE DIGITALE PER
Generator volts (3 phases) Generator amperes (3 phases) Generator frequency KW-meter kVA-meter Cos φ- meter Rpm meter Gen set hours counter Battery Volts	Voltmètre générateur (3 phases) Ampèremètre générateur (3 phases) Fréquencemètre générateur KW-mètre kVA- mètre Cos φ- mètre Tm mètre Totalisateur d'heures de marche Voltmètre batterie	Voltmetro (3 fases) Amperimetro (3 fases) Frecuencimetro KW- metro kVA- metro Cos φ- metro Revoluciones por minuto metro Medida horas de marcha Voltmetro batería	Voltmetro tensione generatore (3 fasi) Amperometro generatore (3 fasi) Frequenzimetro generatore KW- metro kVA- metro Cos φ- metro Gm metro Contaore di funzionamento gruppo Voltmetro batteria

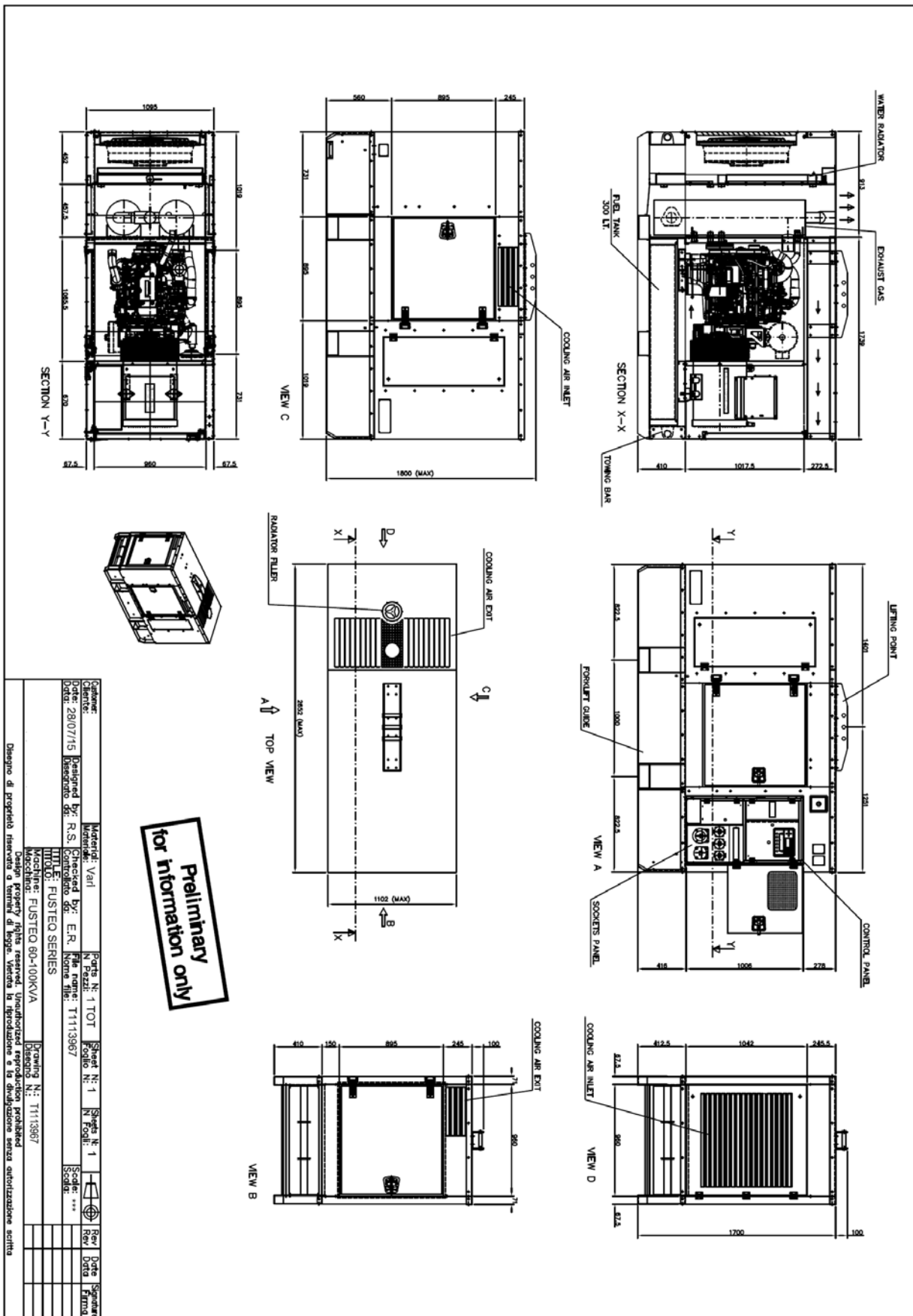
**AUTOMATIC CONTROL PANEL
COFFRET ELECTRIQUE AUTOMATIQUE
CUADRO ELECTRICO AUTOMATICO
QUADRO ELETTRICO AUTOMATICO**

<p>1) ACP 7320 ATS</p> 	<p>COMPLETE CONTROL PANEL FREE STANDING TYPE Equipment: control board, circuit breaker, battery charger, transfer switch, box key. COFFRET ELECTRIQUE COMPLET TYPE ARMOIRE SEPRE DU GROUPE Equipement : carte électronique de contrôle, disjoncteur de protection, chargeur de batterie, inverseur de source, clé coffret. CUADRO ELECTRICO COMPLETO EN ARMARIO SEPARADO DEL GRUPO Equipamiento: carta electronica de controllo, interruptor magnetotermico, cargador de bateria, transferencial, llave quadro. QUADRO ELETTRICO COMPLETO SEPARATO DAL GRUPPO Equipaggiamento: scheda elettronica di controllo, interruttore magnetotermico, carica batteria, telecommutazione e chiave quadro.</p>
<p>2) ACP 7320 AMF</p> 	<p>AMF CONTROL PANEL FITTED ON THE GEN-SET WITHOUT TRANSFER SWITCH Equipment: control board, circuit breaker, battery charger, box key. COFFRET ELECTRIQUE MONTE SUR LE GROUPE SANS INVERSEUR DE SOURCE Equipement : carte électronique de contrôle, disjoncteur de protection, chargeur de batterie, clé coffret. CUADRO ELECTRICO MONTADO SOBRE EL GRUPO SIN TRANSFERENCIAL Equipamiento: carta electronica de controllo, interruptor magnetotermico, cargador de bateria, llave quadro. QUADRO ELETTRICO MONTATO SUL GRUPPO ELETTROGENO SENZA TELECOMMUTAZIONE Equipaggiamento: scheda elettronica di controllo, interruttore magnetotermico, carica batteria, chiave quadro.</p>
<p>3) ACP 7320 STS</p> 	<p>CONTROL PANEL FITTED ON THE GEN-SET WITH TRANSFER SWITCH SUPPLIED IN A SEPARATED BOX Equipment: control board, circuit breaker, battery charger, box key, separate transfer switch. COFFRET ELECTRIQUE MONTE SUR LE GROUPE + INVERSEUR DE SOURCE FOURNI DANS UN COFFRET SEPRE Equipement : carte électronique de contrôle, disjoncteur de protection, chargeur de batterie, inverseur de source séparé, clé coffret. CUADRO ELECTRICO MONTADO SOBRE EL GRUPO CON TRANSFERENCIAL SEPARADO Equipamiento: carta electronica de controllo, interruptor magnetotermico, cargador de bateria, llave quadro, transferencial separado. QUADRO ELETTRICO MONTATO SUL GRUPPO ELETTROGENO CON TELECOMMUTAZIONE SEPARATA Equipaggiamento: scheda elettronica di controllo, interruttore magnetotermico, carica batteria, chiave quadro, telecommutazione in armadio separato.</p>

 <p>DSE 7320</p>	<p>CONTROL BOARD CARTE ELECTRONIQUE DE CONTROL CARTA ELECTRONICA DE CONTROL SCHEDA ELETTRONICA DI CONTROLLO</p>
--	--

GB	F	E	I
<p>The DSE7320 is an Automatic Mains Failure Control Module designed to automatically start and stop diesel generating sets that include electronic and non electronic engines. The module also provides excellent genset monitoring and protection features.</p>	<p>La DSE7320 est une carte de contrôle projetée pour démarrer et arrêter automatiquement groupes électrogènes diesels avec moteurs électroniques et non électroniques. La carte représente un système excellent de contrôle et de protection du groupe électrogène.</p>	<p>La DSE7320 es una carta de control para arranque y parar automáticamente grupos electrógenos diesel con motores electrónicos y no electrónicos. La carta constituye un excelente sistema de control y protección del grupo electrógeno.</p>	<p>La DSE7320 è una scheda di controllo progettata per avviare e arrestare automaticamente gruppi elettrogeni diesel con motori elettronici e non elettronici. La scheda costituisce un eccellente sistema di controllo e di protezione del gruppo elettrogeno.</p>
FEATURES	EQUIPEMENT	EQUIPMENT	EQUIPAGGIAMENTO
<p>Stop/reste – Auto – Manual – Start LCD display scroll Event log view Acoustic alarm</p>	<p>Fiche électronique de contrôle DSE7320 Disjoncteur de protection Chargeur de batterie Bouton poussoir arrête d'urgence</p>	<p>Ficha electrónica de control DSE7320 Interrupor magnetotermico Cargador de batería Boton de parada de emergencia</p>	<p>Scheda elettronica di controllo DSE7320 Interruttore magnetotermico Carica batteria Pulsante stop emergenza</p>
DIGITAL MEASURING	MESURES NUMERIQUES	MEDIDAS DIGITALES	MISURAZIONI DIGITALI
<p>Generator volts (3 phases) Generator amperes (3 phases) Generator frequency KW-meter kVA-meter Cos φ- meter Rpm meter Water temperature (optional) Oil pressure (optional) Gen set hours counter Mains volts Battery volts Mains frequency Charging voltage Start-counter Fuel level %</p>	<p>Voltmètre générateur (3 phases) Ampèremètre générateur (3 phases) Fréquencemètre générateur KW-mètre kVA- mètre Cos φ- mètre Tm mètre Température eau (facultatif) Pression huile (facultatif) Totalisateur d'heures de marche Voltmètre secteur Voltmètre batterie Fréquence réseau Tension de charge Compteur démarrages Niveau combustible %</p>	<p>Voltmetro (3 fases) Amperimetro (3 fases) Frecuencimetro KW- metro kVA- metro Cos φ-metro Revoluciones por minuto metro Termometro agua (opcional) Presión aceite (opcional) Medida horas de marcha Voltmetro tensión de red Voltmetro batería Frecuencia red Tensión de carga Numero de arranques Nivel carburante %</p>	<p>Voltmetro tensione generatore (3 fasi) Amperometro generatore (3 fasi) Frequenzimetro generatore KW- metro kVA- metro Cos φ-metro Gm metro Temperatura acqua (facoltativo) Pressione olio (facoltativo) Contaore di funzionamento gruppo Voltmetro tensione rete Voltmetro batteria Frequenza rete Tensione di carica Contavviamenti Livello carburante %</p>
INDICATORS	INDICATEURS	INDICADORES	INDICATORI
<p>Mains live Generator live Mains contactor closed Generator contactor closed Engine running</p>	<p>Présence secteur Présence tension générateur Inverseur secteur fermé Inverseur générateur fermé Moteur en marche</p>	<p>Presencia tensión de red Presencia tensión grupo Transferencial red cerrado Transferencial grupo cerrado Motor en marcha</p>	<p>Presenza tensione di rete Presenza tensione generatore Erogazione da rete Erogazione da gruppo Motore avviato</p>
PROTECTIONS	PROTECTIONS	PROTECCIONES	PROTEZIONI
<p>Low oil pressure High engine temperature Low fuel level Fail to start Fail to stop Emergency stop Over/under frequency Over/under voltage Over/under speed Fuel level Belt breakage Over current Over/under battery voltage</p>	<p>Bas pression huile moteur Haute température moteur Bas niveau combustible Non démarrage Non arrêt Arrêt d'urgence Sur/sous fréquence Sur/sous voltage Sur/sous vitesse Niveau de combustible Rupture courroie Surcourant Sur/sus la tension de batterie</p>	<p>Baja presión aceite Elevada temperatura motor Baja nivel carburante Falta de arranque Falta de parada Parada de emergencia Sobre/bajo frecuencia Sobre/bajo voltaje Sobre/bajo velocidad nivel de combustible Ruptura correa Corriente maxima Sobre/bajo voltaje de la batería</p>	<p>Bassa pressione olio Alta temperatura motore Basso livello di carburante Mancato avviamento Mancato arresto Stop d'emergenza Sovra/sotto frequenza Sovra/sotto voltaggio Sovra/sotto velocità Livello del carburante Rottura cinghia Sovraccorrente Sovra/sotto tensione della batteria</p>

SOUND PROOF VERSION DRAWING
 DESSIN VERSION INSONORIZEE
 DIBUJO VERSION INSONORISADA
 DISEGNO VERSIONE INSONORIZZATA



Preliminary
for information only

1100 Series 1104A-44TG2 Diesel Engine – Electropak

79.1 kWm at 1500 rpm
90.2 kWm at 1800 rpm

Building upon Perkins proven reputation within the power generation industry, the 1100 Series range of Electropak engines now fit even closer to customers needs.

In the world of power generation success is only gained by providing more for less. With the 1104A-44TG2 Perkins has engineered even higher levels of reliability, yet lowered the cost of ownership.

1100A units are designed for territories that do not require compliance to EPA or EU emissions legislation. These units are able to meet TA luft legislation.

Compact, efficient power

- 1100 Series is the result of an intensive period of customer research that has guided the development of the range
- The new 4.4 litre cylinder block ensures bore roundness is maintained under the pressures of operation. It also ensures combustion and mechanical noise is lowered
- A new cylinder head has re-established Perkins mastery of air control

Quality by design

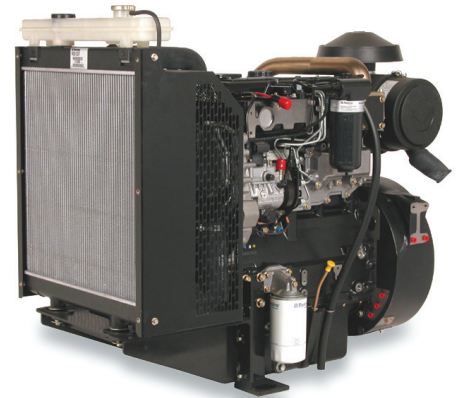
- Product design and Class A manufacturing improvements enhance product reliability while maintaining Perkins legendary reputation for durability

Cost effective power

- Compact size and low noise
- Lower fuel consumption and oil use
- 500 hour service intervals
- 2 year warranty

Product support

- Perkins actively pursues product support excellence by ensuring our distribution network invest in their territory – strengthening relationships and providing more value to you, our customer
- Through an experienced global network of distributors and dealers, fully trained engine experts deliver total service support around the clock, 365 days a year. They have a comprehensive suite of web based tools at their fingertips covering technical information, parts identification and ordering systems, all dedicated to maximising the productivity of your engine
- Throughout the entire life of a Perkins engine, we provide access to genuine OE specification parts and service. We give 100% reassurance that you receive the very best in terms of quality for lowest possible cost .. wherever your Perkins powered machine is operating in the world



Engine Speed (rev/min)	Type of Operation	Typical Generator Output (Net)		Engine Power			
				Gross		Net	
		kVA	kWe	kWm	bhp	kWm	bhp
1500	Prime Power	80.0	64.0	73.4	98.4	71.9	96.4
	Standby Power	88.0	70.4	80.7	108.2	79.1	106.1
1800	Prime Power	91.3	73.0	84.5	113.3	82.0	109.9
	Standby Power	100.3	80.3	93.0	124.7	90.2	121.0

The above ratings represent the engine performance capabilities to conditions specified in ISO 8528/1, ISO 3046/1:1986, BS5514/1. Derating may be required for conditions outside these; consult Perkins Engines Company Limited.

Generator powers are typical and are based on an average alternator efficiency and a power factor (cos. θ) of 0.8. Fuel specification: BS 2869: Part 2 1998 Class A2 or DIN EN 590. Lubricating oil: 15W40 to API CG4.

Rating Definitions

Prime Power: Variable load. Unlimited hours usage with an average load factor of 80% of the published prime power over each 24 hour period. A 10% overload is available for 1 hour in every 12 hours of operation. **Standby Power:** Variable load. Limited to 500 hours annual usage, up to 300 hours of which may be continuous running. No overload is permitted.

Photographs are for illustrative purposes only and may not reflect final specification.

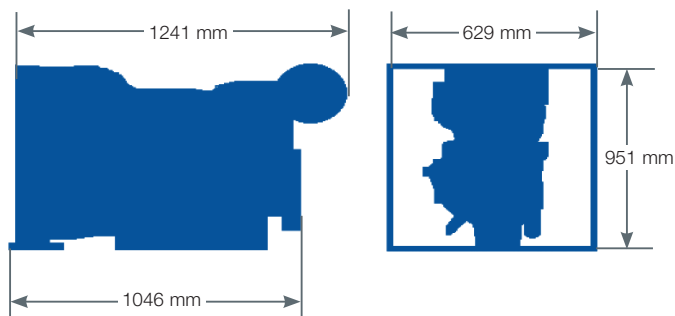
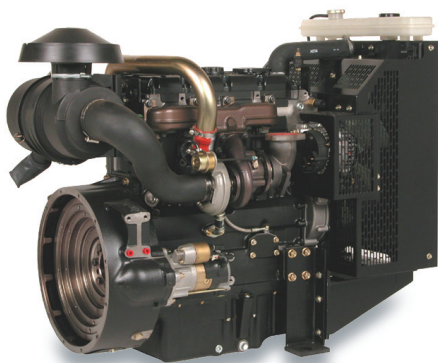
All information in this document is substantially correct at time of printing and may be altered subsequently. Publication No. PN1784/09/12 Produced in England ©2012 Perkins Engines Company Limited

 **Perkins**[®]

THE HEART OF EVERY GREAT MACHINE

1100 Series 1104A-44TG2 Diesel Engine – Electropak

79.1 kWm at 1500 rpm
90.2 kWm at 1800 rpm



Standard Electropak specification

Air inlet

- Mounted air filter

Fuel system

- Rotary type pump
- Ecoplus fuel filter

Lubrication system

- Wet sump with filler and dipstick
- Spin-on oil filter

Cooling system

- Thermostatically controlled system with gear-driven circulation pump and belt-driven pusher fan
- Mounted radiator and piping

Electrical equipment

- 12 volt starter motor and 12 volt 65 amp alternator with DC output
- 12 volt shutdown solenoid energised to run

Flywheel and housing

- High inertia flywheel to SAE J620 Size 10/11½
- SAE 3 flywheel housing

Mountings

- Front engine mounting bracket

Literature

- User's Handbook

Optional equipment

- Woodward electronic governor (LCG2)
- Workshop manual
- Parts book

Fuel Consumption				
Engine Speed	1500 rev/min		1800 rev/min	
	g/kWh	l/hr	g/kWh	l/hr
110% of Prime Power	4.5	20.5	5.3	24.4
100% of Prime Power	4.1	18.7	4.9	22.3
75% of Prime Power	3.0	14.0	3.7	16.9
50% of Prime Power	2.1	9.7	2.6	11.9

General data

Number of cylinders 4 vertical in-line
Bore and stroke.....105 x 127 mm
Displacement 4.4 litres
Aspiration Turbocharged
Cycle.....4 stroke
Combustion system.....Direct injection
Compression ratio 17.25:1
Rotation.....Anti-clockwise viewed from flywheel
Cooling system.....Water-cooled
Total lubrication system capacity..... 8.0 litres
Total coolant capacity 13.0 litres
Dimensions – Length 1241 mm
Width 629 mm
Height 951 mm
Dry weight (approx.)..... 463 kg
Final weight and dimensions will depend on completed specification

Photographs are for illustrative purposes only and may not reflect final specification.

All information in this document is substantially correct at time of printing and may be altered subsequently.
Publication No. PN1784/09/12 Produced in England
©2012 Perkins Engines Company Limited

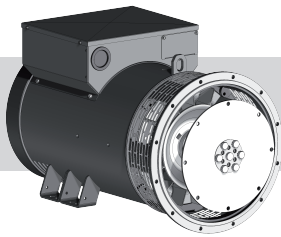
Perkins Engines Company Limited

Peterborough PE1 5FQ
United Kingdom
Telephone +44 (0)1733 583000
Fax +44 (0)1733 582240

www.perkins.com



THE HEART OF EVERY GREAT MACHINE



meccalte



ECP32

MECCALTE spa - Via Roma, 20 - 36051 CREAZZO (VI) ITALIA
Tel. +39 0444/396111 - Fax +39 0444/396166 - e-mail : info@meccalte.it
web site: www.meccalte.com

4 POLE **A**

CHARACTERISTICS

INDUSTRIAL RATINGS

ambient 40 ° C

Type	kVA - cos φ 0.8 - 3 Phase continuous							Efficiency			1 Phase kVA COSφ1 CL H (ΔT= 125 °C) DELTA
	CL H (ΔT= 125 °C)				CL F (ΔT= 105 °C)			CL H (ΔT= 125 °C)			
50 Hz											
Series Star λ	380	400	415		380	400	415				
Parallel Star $\lambda\lambda$	190	200	208	IP45	190	200	208	2/4	3/4	4/4	
Series Delta Δ	220	230	240	400V	220	230	240				
Parallel Delta $\Delta\Delta$	110	115	120		110	115	120				
ECP32-2S/4	35	35	35	29	33	33	33	86,8	88,6	88,2	23,5
ECP32-3S/4	42,5	42,5	42,5	34	39	39	39	87,3	89,1	88,6	28
ECP32-1L/4	50	50	50	40	48	48	48	87,6	89,5	89,1	33
ECP32-2L/4	63	63	63	53	60	60	60	89,5	90,8	90,2	42
ECP32-3L/4	75	75	75	60	67	67	67	89,7	91,1	90,7	48
ECP32-4L/4	80	80	80	64	71	71	71	89,6	90,9	90,5	51

Type	CL H (ΔT= 125 °C)				CL F (ΔT= 105 °C)			Efficiency			1 Phase kVA COSφ1 CL H (ΔT= 125 °C) DELTA
	CL H (ΔT= 125 °C)				CL F (ΔT= 105 °C)			CL H (ΔT= 125 °C)			
60 Hz											
Series Star λ	440	460	480		440	460	480				
Parallel Star $\lambda\lambda$	220	230	240	IP45	220	230	240	2/4	3/4	4/4	
Series Delta Δ	254	265	277	480V	254	265	277				
Parallel Delta $\Delta\Delta$	127	133	138		127	133	138				
ECP32-2S/4	42	42	42	34,8	40	40	40	89	90,2	89,8	28
ECP32-3S/4	51	51	51	40,8	49	49	49	89	90,6	90	34
ECP32-1L/4	60	60	60	48	58	58	58	89,1	92,1	91,8	39,5
ECP32-2L/4	71	75,5	75,5	63	68	72	72	91,1	93,3	92,8	50
ECP32-3L/4	86	90	90	72	80	83	83	91,1	93,4	93,2	60
ECP32-4L/4	92	96	96	77	85	88	88	91	93,2	93	62

STANDBY RATINGS

Type	kVA Temp. Rise / Ambient °C			kVA Temp. Rise / Ambient °C		
	50 Hz			60 Hz		
	163° / 27°	150° / 40°	125° / 27°	163° / 27°	150° / 40°	125° / 27°
ECP32-2S/4	39	36,7	36,7	47	44	44
ECP32-3S/4	48	46	46	57	54	54
ECP32-1L/4	56	52,5	52,5	67	63	63
ECP32-2L/4	71	65,5	65,5	83	78	78
ECP32-3L/4	83	78	78	100	93,7	93,7
ECP32-4L/4	87	82	82	104	98	98

Type	J (kgm ²) B3-B14 FORM	Weight (kg)	Air Volume		Noise dB(A)			
					50 Hz		60 Hz	
			50 Hz (m ³ /min)	60 Hz (m ³ /min)	1m	7m	1m	7m
ECP32-2S/4	0,322	194	11,8	14,5	75	60	79	64
ECP32-3S/4	0,350	209						
ECP32-1L/4	0,421	243						
ECP32-2L/4	0,503	277						
ECP32-3L/4	0,570	293						
ECP32-4L/4	0,592	294	12,9	15,8	76	61	80	65

ACCESSORIES

REGULATOR				PARALLEL DEVICE	THERMAL PROTECTION			HEATERS	MECHANICAL PROTECTION	
DSR	DER-1	SR7/2	UVR6		PTC	BIMET. DEVICE	PT100		IP23	IP45
<input checked="" type="checkbox"/>	<input type="checkbox"/>	<input type="checkbox"/>	<input type="checkbox"/>	<input type="checkbox"/>	<input type="checkbox"/>	<input type="checkbox"/>	<input type="checkbox"/>	<input type="checkbox"/>	<input checked="" type="checkbox"/>	<input type="checkbox"/>

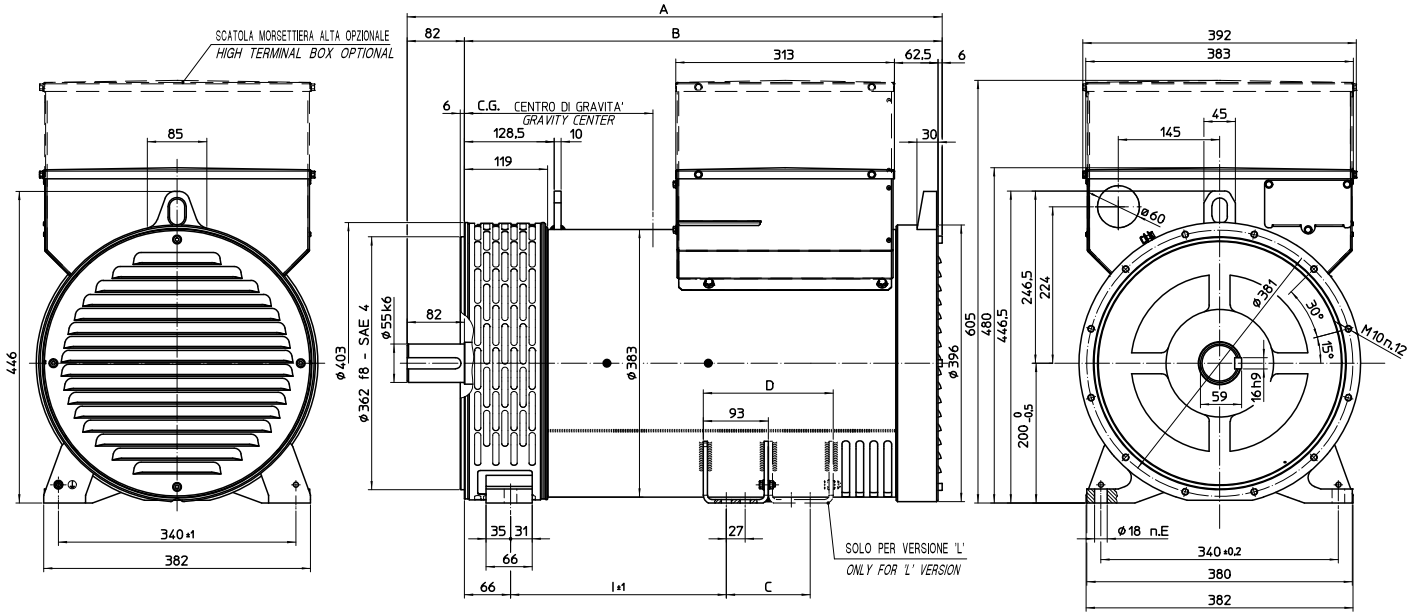
● = Standard
□ = Optional

Rating



OVERALL DIMENSIONS B3 - B14 FORM

dimensions in mm

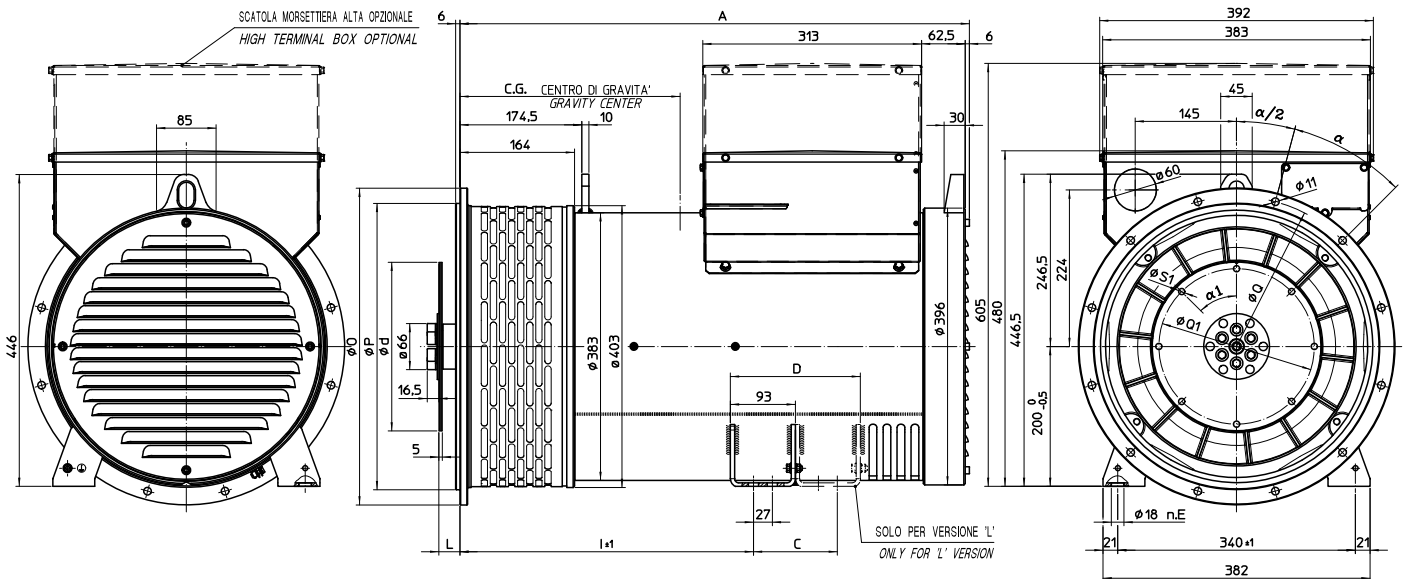


TIPO / TYPE	C. G.
ECP 32-2S/4	269
ECP 32-3S/4	274
ECP 32-1L/4	316
ECP 32-2L/4	330
ECP 32-3L/4	351

TIPO/TYPE/TYP	A	B	I	C	D	E
ECP 32 S A	638	556	184	-	-	6
ECP 32 L A	763	681	309	120	186	10

OVERALL DIMENSIONS MD35 FORM

dimensions in mm



TIPO / TYPE	C. G.
ECP 32-2S/4	312
ECP 32-3S/4	316
ECP 32-1L/4	366
ECP 32-2L/4	377
ECP 32-3L/4	388
ECP 32-4L/4	388

TIPO/TYPE/TYP	A	I	C	D	E
ECP 32 S A	601	295	-	-	4
ECP 32 L A	726	420	120	186	8

SAE N.	GIUNTI A DISCHI DISC COUPLING DISQUE DE MONOPALIER SCHEIBENKUPPLUNG				
	L	d	Q1	S1	α1
6 1/2	30,2	215,9	200	9	60°
7 1/2	30,2	241,3	222,25	9	45°
8	62	263,52	244,47	11	60°
10	53,8	314,32	295,27	11	45°
11 1/2	39,6	352,42	333,37	11	45°

SAE N.	FLANGIE FLANGE BRIDE FLANSCH BRIDAS			
	O	P	Q	α
5	356	314,3	333,4	45°
4	403	362	381	30°
3	451	409,6	428,6	30°
2	490	447,7	466,7	30°
1	552	511,2	530,2	30°