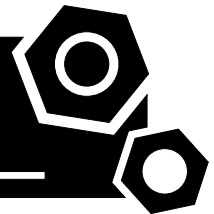


Mobile light tower

ALT2000

SPECIFICATIONS



www.powerlinkworld.com

CONTACT US TODAY

1300 885 789 | paul@powergenaustralia.com.au
powergenaustralia.com.au

PowerGen
— AUSTRALIA —
AUTHORISED DEALER

Mobile Light Tower ALT2000



1 Standards & Conditions

Design Standards

The designs and the productions are in conformity with:

- GB T 1883.1-2005
- JB8891-1999
- GB252-2011
- GB20891-2014
- GB4208-2008
- VSB 1 Rev 4 June 1999
- AS3000: 2018
- AS3010: 2017

Design Conditions

- Installation place: outdoors.
- Ambient temperature: -15°C to 50°C. The coolant heater is needed when the temperature is below 0°C
- Humidity: Less than 90%.
- Altitude: Less than one thousand (1000) meters above sea Level.

Painting Process

- Painting process specifications and colors are based on the manufacturer's standard.
- The customer could also choose the color which the manufacturer offers.

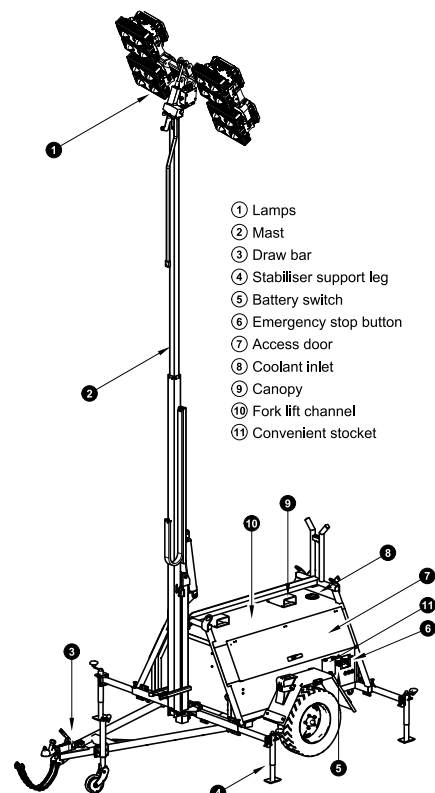
2 General Features

- Kubota engine Z482-E4B-ACP-1
- DC/VF alternator PMG-DC-18-4
- Microprocessor control module PLC-810
- Governor type : Electronic control
- 4x500W metal LED lamps
- 1x12V/120AH sealed for life maintenance free battery(supply for engine)
- Emergency stop switch
- Anderson jump start socket
- Lockable battery isolator switch
- Powder coated canopy
- Vibration isolators between the engine/alternator and base frame
- Dry type air cleaner
- Fuel tank(>24 running hours under full load)
- Fuel drain outlet
- Easy maintenance (easy to replace the current rectifier etc.)
- Operation Manual / Specifications

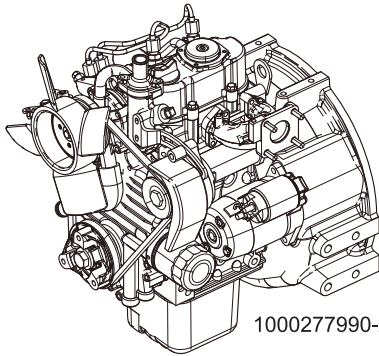
3 Equipment Specification

Model.....	ALT2000
Light type.....	LED
Luminous flux(Max)lm.....	202600
Light intensity(Max)cd.....	213125
Tank capacity.....	200L
Dry weigh.....	1790kg
Total lighting wattage.....	4x500W
Tire size.....	245R16LT
Dimensions (Fully retracted).....	4990x1983x2472mm
Dimensions (Fully extended).....	4237x2936x8418mm
Three masts with manual rotation.....	144°
Tilting Angle of Light Fixture rotation.....	90°
Maximun towing speed.....	80km/h
Maximun wind speed rating.....	100km/h
Sound pressure level @7m.....	58dB(A)
Fully extended/retracted time.....	50/50s
Hydraulic oil type.....	L-HM46
Hydraulic oil tank capacity.....	8L
Rated output.....	4.0kW
Voltage/Ampere.....	DC 48V/83.3A

Light Tower Fuel Consumption		
Frequency/Load	2xLamps	4xLamps
50Hz	0.48	0.76



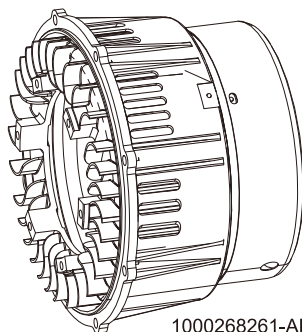
Engine



1000277990-AP1-A1

Engine Manufacturer/Brand.....	KUBOTA
Engine Model.....	Z482-E4B-ACP-1
Dimensions L×W×H.....	487.9×412×564.2mm
Dry Weigh (approx.).....	80Kg
Number of Cylinders.....	2
Bore.....	67mm
Stroke.....	68mm
Displacement.....	0.479L
Compression Ratio.....	23.5
Type of Injection.....	Spherical Type (E-TVCS)
Intake System.....	Natural aspirated
Intake Resistance.....	≤2.45kPa
Cooling System.....	Water cooled
Fan.....	Pusher
Battery Voltage.....	12V
Type of Fuel.....	No.2-D (ASTMD975)
Type of Oil.....	API -CH
Oil Capacity.....	2.5L
Type of Coolant.....	Glycol mixture
Back Pressure.....	9.33kPa
Speed.....	1800rpm
Prime Power.....	4.6kW

Alternator

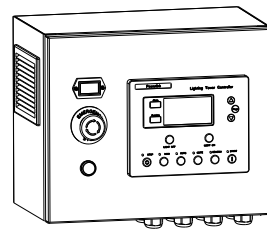


1000268261-AP1-A1

Alternator Manufacturer/Brand.....	POWERLINK
------------------------------------	-----------

Alternator Model.....	PMG-DC-18-4
Stator Pole Number.....	30
Speed.....	1800rpm
Voltage(DC).....	48V
Altitude.....	≤1000m

PLC-810 Control System



1000234570-AP1-A1

PLC-810 is an advanced control module based on microprocessor, apply to AC/DC light tower. The controller is equipped with a powerful graphic display showing icons, symbols and bar graphs for intuitive operation. Accurately measure various operational parameters and display all values and alarms information on the LCD.

- Microprocessor control, with high stability and credibility
- Monitoring and measuring operational parameters of light tower
- Indicating operation status, fault conditions, all parameters and alarms
- Manual, automatic and remote work mode selectable
- Multiple protections; multiple parameters display, like pressure, temp. etc.
- Overall power output display
- Real time clock for time and date display, overall runtime display, 99 log entries
- Communication with PC via RS485 interface, using MODBUS protocol

CONTACT US TODAY

1300 885 789 | psu@powergenaustralia.com.au
powergenaustralia.com.au

PowerGen
— AUSTRALIA —

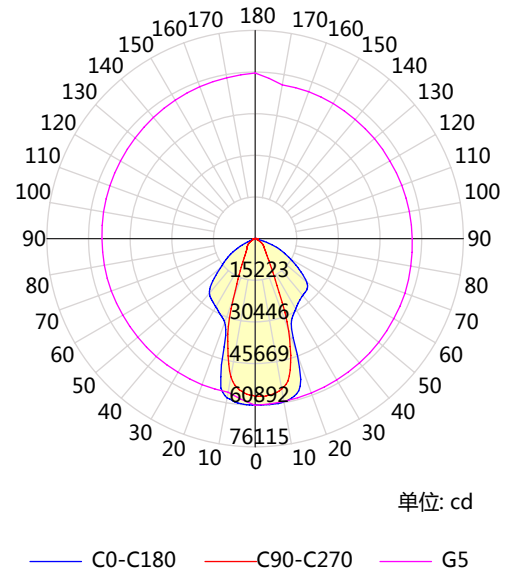
AUTHORISED DEALER

4 Luminaire

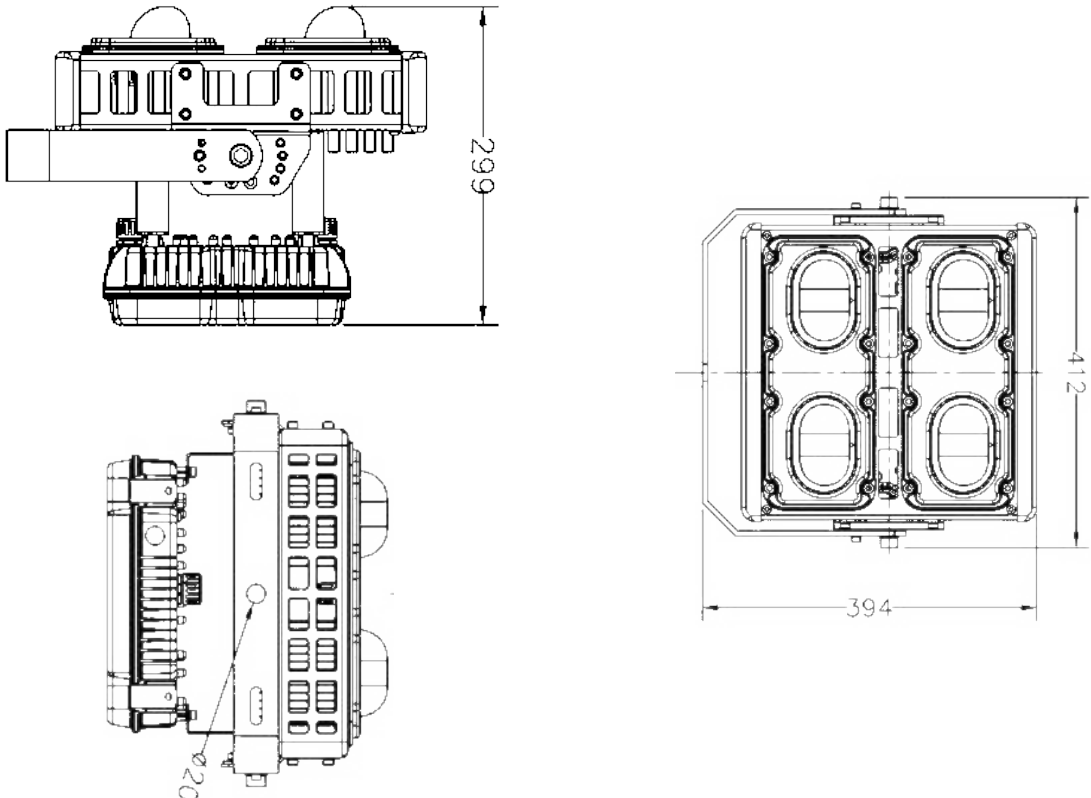
Luminaire Data:

Item	Description
Rated power	500W
Rated luminous flux	54661.8 lm
Luminaire efficiency	100%
Upper luminous flux ratio	1%
Center light intensity	60740.43 cd
Peak light intensity position	H0 V5
Luminous flux of lamps and lanterns	54661.8 lm
Lower luminous flux ratio	99%
Lamp luminous efficiency rating	110.59
Peak light intensity	60892.13 cd

Luminous emittance 1:



Out-line:



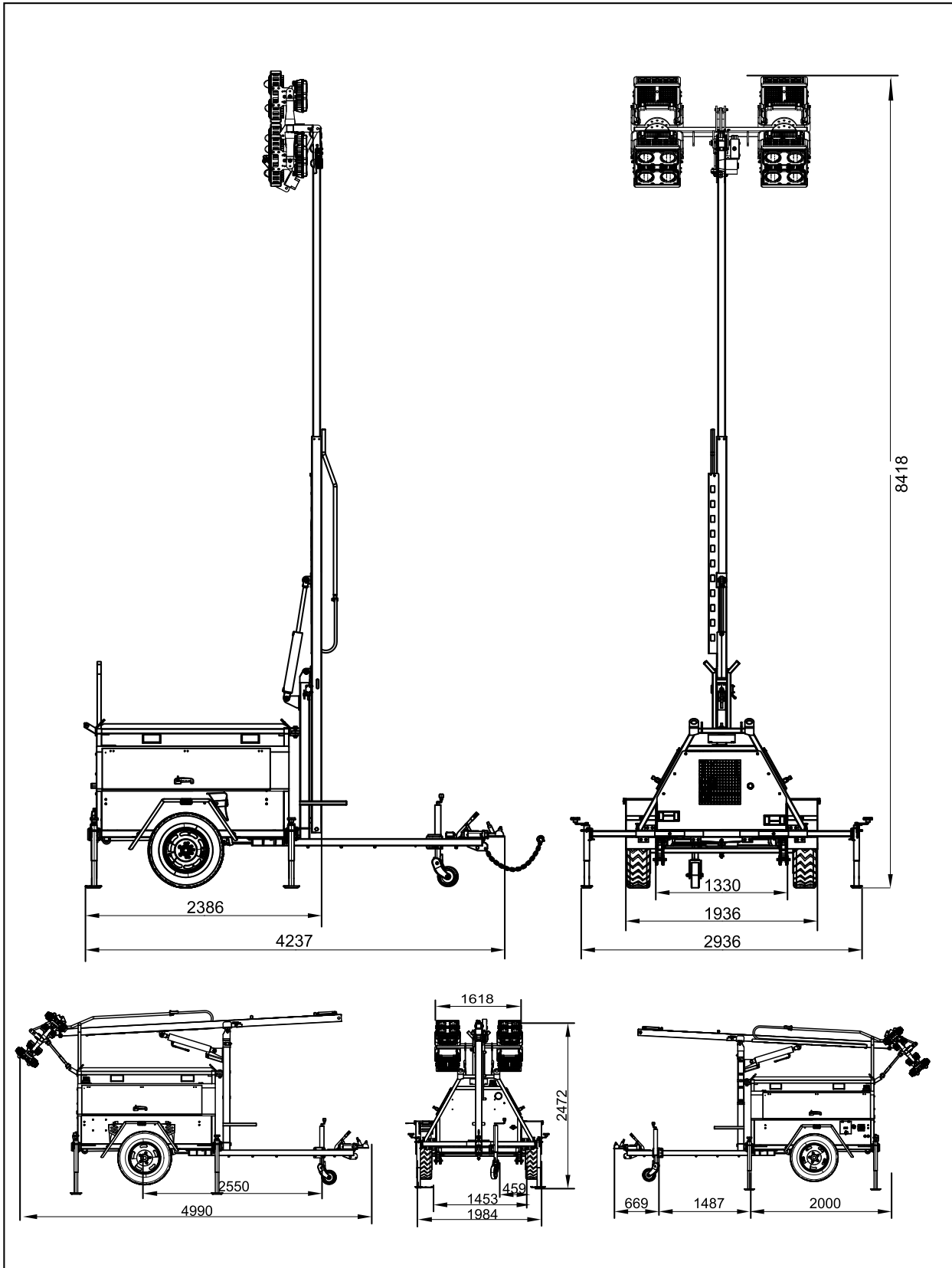
CONTACT US TODAY

1300 885 789 | psu@powergenaustralia.com.au
powergenaustralia.com.au

PowerGen
AUSTRALIA

AUTHORISED DEALER

5 Overall Dimension



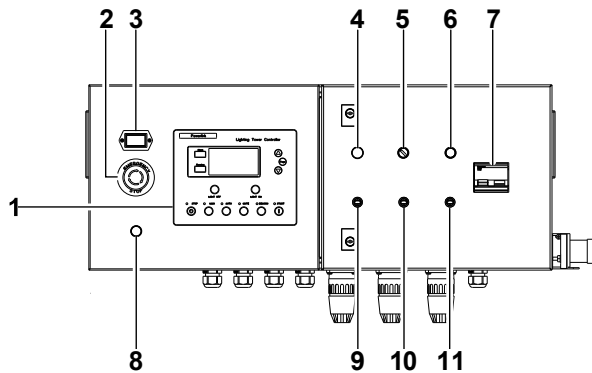
CONTACT US TODAY

1300 885 789 | psu@powergenaustralia.com.au
powergenaustralia.com.au

PowerGen
 AUSTRALIA

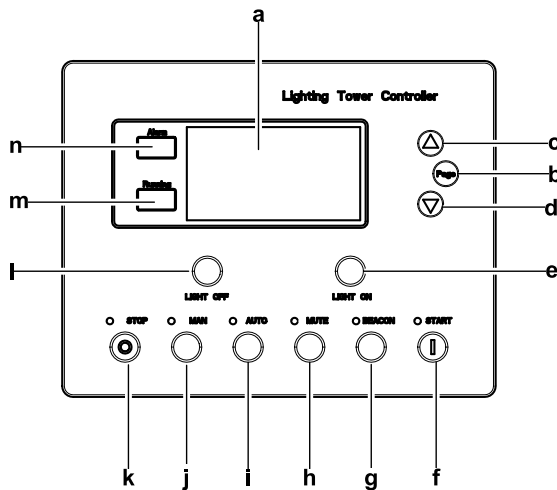
AUTHORISED DEALER

6 Control System



Control cabinet & Switch cabinet

Ref.	Description
1	Control module
2	Emergency stop button
3	Time counter
4	Horizontal indicator light
5	Alarm light switch
6	Confirm button
7	Main circuit breaker
8	Dead man button
9	Mast tilting switch
10	Mast up/down switch
11	Lamp tilting switch



Control module

Ref.	Description
a	Main status display
b	Cyclic selection of the display mode (MEASUREMENT->ADJUSTMENT)
c	Select the set point, select the screen or increase set point value
d	Select the set point, select the screen or decrease set point value
e	Turn on a light each press in manual mode
f	Start of the engine in manual mode
g	Open/close button of Annunciator
h	Deactivates the horn
i	Auto mode
j	Manual mode
k	Stop of the engine/Alarm reset button
l	Turn off a light each press in manual mode
m	Running indicator
n	Alarm indicator

1000234570-IT1-A1

CONTACT US TODAY

1300 885 789 | psu@powergenaustralia.com.au
powergenaustralia.com.au

PowerGen
 AUSTRALIA

AUTHORISED DEALER

10.2018

<http://www.powerlinkworld.com>

*Specification may change without prior notice. For more info.,
contact Power Link or your local distributors please.*

©2014 POWERLINK

CONTACT US TODAY

1300 885 789 | psu@powergenaustralia.com.au
powergenaustralia.com.au

PowerGen
— AUSTRALIA —
AUTHORISED DEALER